

**Inventions, Preparations, &c.**

HOSPITAL CONSTRUCTION.—The man who can, within three weeks of the receipt of your order, erect you a substantial and durable building, fitted with every requisite and convenience, ready for immediate habitation, surely possesses powers which entitle him to rank with the good genii of

secured along the whole length of the building, independently of the windows, by means of a special arrangement of iron capping on the apex of the roof. Fig. 2 is a plan of the same, showing the disposition of the rooms and offices, with dimensions. All rooms and offices are here confined to one floor, an advantage which Nurses will appreciate, and which should always be

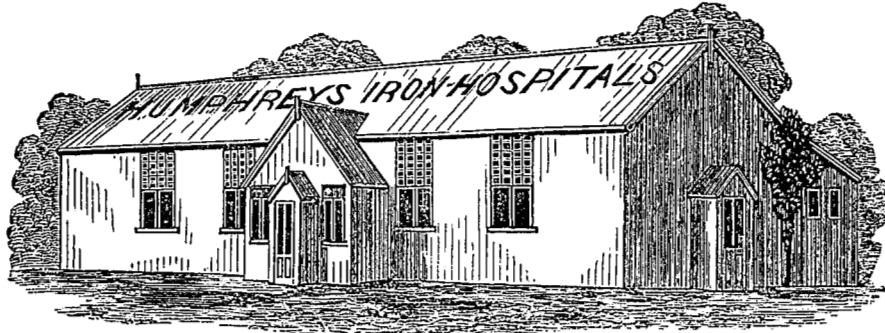


FIG. 1.

the "Thousand and One Nights." Such are the powers possessed by Mr. J. C. Humphreys, inventor of the corrugated iron buildings. These are characterised by so many points that give them a peculiar fitness as Hospital buildings—a capacity in which they have been thoroughly tested—that a few words concerning them may not come amiss to our readers. Fig. 1 gives a general view of the exterior of a building with accom-

modation for eight patients and Nurse or Matron. The buildings have several points in their favour—they are cheap (that illustrated would cost about £320, erected ready for use); while the price for a similar one to accommodate twice the number of patients would not exceed £400, the proportionate price decreasing rapidly as the size of the building is increased. They are speedily erected; of this point we have spoken already

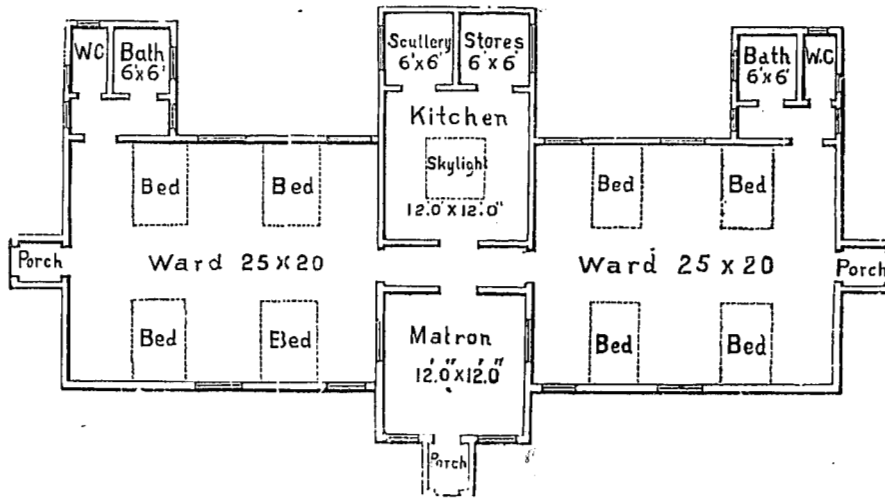


FIG. 2.

modation for eight patients and Nurse or Matron. The outside shell is made of the well-known corrugated iron. Inside it is lined throughout with pine match-boarding; but between this and the iron comes a lining of thick felt, which has the advantage of excluding the excessive heat of summer and cold of winter. Ventilation is

but may add here, that in cases of emergency the whole work has been carried out in spaces of time varying from four to ten days. The benefit of this cannot be over-estimated in cases where towns or villages are desirous of providing or improving Hospital accommodation for immediate use in times of prevalent sickness. To

[previous page](#)

[next page](#)